

An architectural rendering of a modern villa at dusk. The building features a prominent cantilevered upper floor with a glass balcony where a man and a woman are standing. The ground floor is open-plan, showing a living area with white sofas and a dining area with pendant lights. A swimming pool is in the foreground, with a woman sitting on the edge. The scene is lit with warm interior lights and cool exterior twilight colors.

# VILLA EDEN

LA ZAGAleta







# ONE OF THE MOST EXCLUSIVE RESORTS IN WORLD

**La Zagaleta** is a resort that enjoys an extremely exclusive living environment. Located in front of the Mediterranean Coast, it is surrounded by impressive mountainous landscapes such as wooded hills and places of natural beauty. The resort is within a short drive from Marbella and the famous Puerto Banus.





# SINGULAR QUALITY OF LIFE THAT ZAGAleta OFFERS

La Zagaleta has multiple services, including two magnificent championship golf courses considered the most beautiful in Europe.

The fabulous club houses are true places of elegance and sophistication where residents gather and enjoy the many amenities that they offer. The equestrian center enjoys the best facilities to host, train and prepare both competitions and horse training.



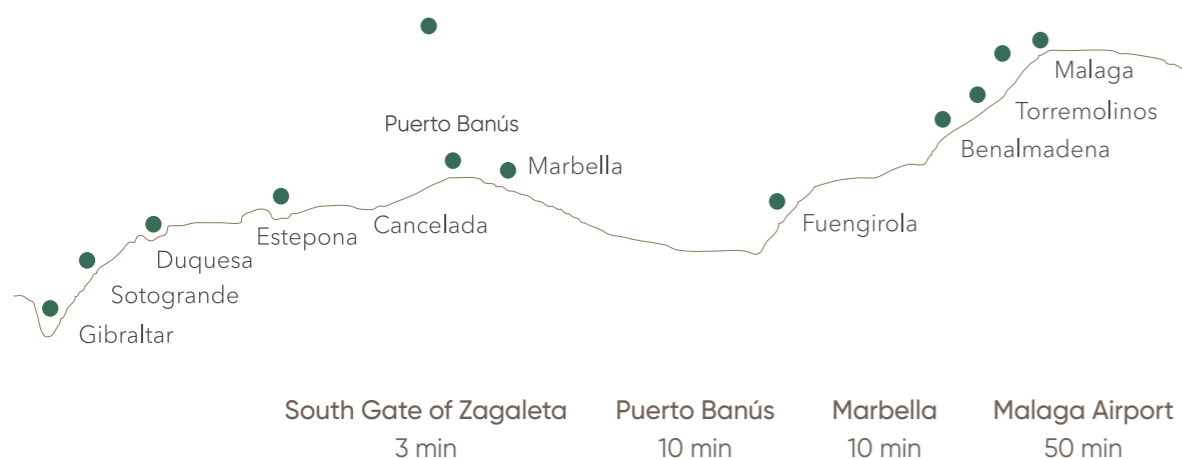




In addition, you have personalized services such as home services, helipad, administrative services, home automation and more.

Living in La Zagaleta is surrounded by the highest standards of quality. Local mansions exceed expectations in terms of design, comfort, performance and magnificence.

## LA ZAGAleta











## LUXURIOUS PROPERTY BUILT IN A UNIQUE ENVIRONMENT

**Villa Eden** is an elite villa, which truly lives up to its name, being a paradisiacal place in La Zagaleta. Living here you can enjoy the beauty of nature and not worry that someone will bother you.

This magnificent property, designed by the famous **Tobal Arquitectos**, combines luxury, modern style and innovative technologies.

We use for its construction the best materials paying special attention to the natural textures, stones and wood. The villa is located on an enormous 12.435 m<sup>2</sup> plot and is very spacious with more than 1.735m<sup>2</sup> of built area. It offers amazing panoramic views of the sea and mountains.



Villa Eden has 6 bedrooms, 7 bathrooms and 4 toilets. It would comfortably fit your family and your guests with plenty room to spare. Beautiful fusion of both classic and contemporary styles, villa Eden also features quite a few novelties, such as sliding roof of the living room which gives a feeling of infinity and spaciousness.

The thoughtfully planned spaces include large open plan living areas, staff accommodation, gymnasium, sauna and steam room, and interior pool from which to enjoy the stunning mountain views. An exterior pool and lovely entertaining areas provide ideal outside living.

**THE VILLA IS CURRENTLY  
UNDER CONSTRUCTION.**







6

BEDROOMS

7

BATHROOMS

1.735m<sup>2</sup>

BUILT

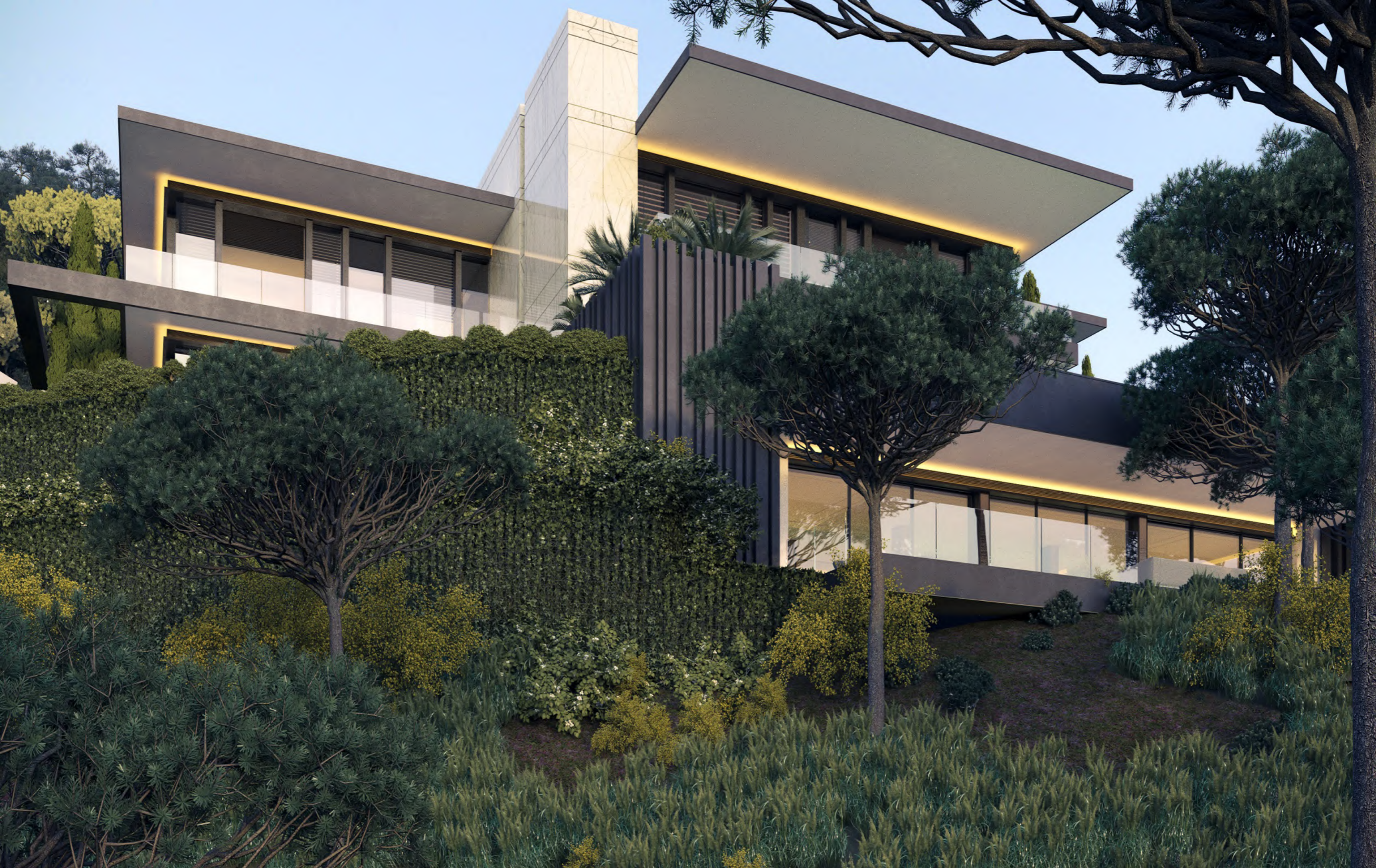
12.435m<sup>2</sup>

PLOT SIZE

27.500.000 €

PRICE

















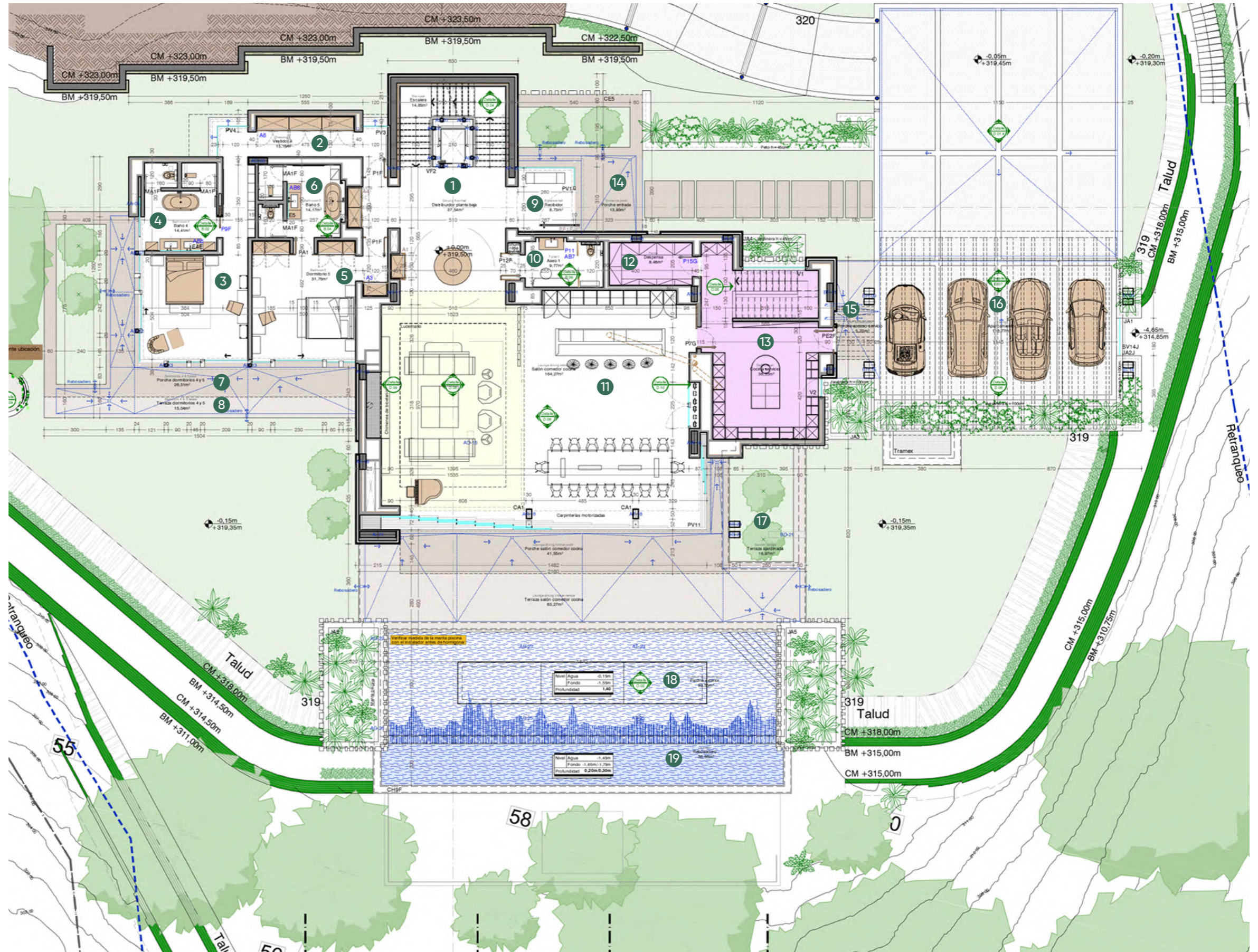
CONSTRUCTION IN PROGRESS





# GROUND FLOOR

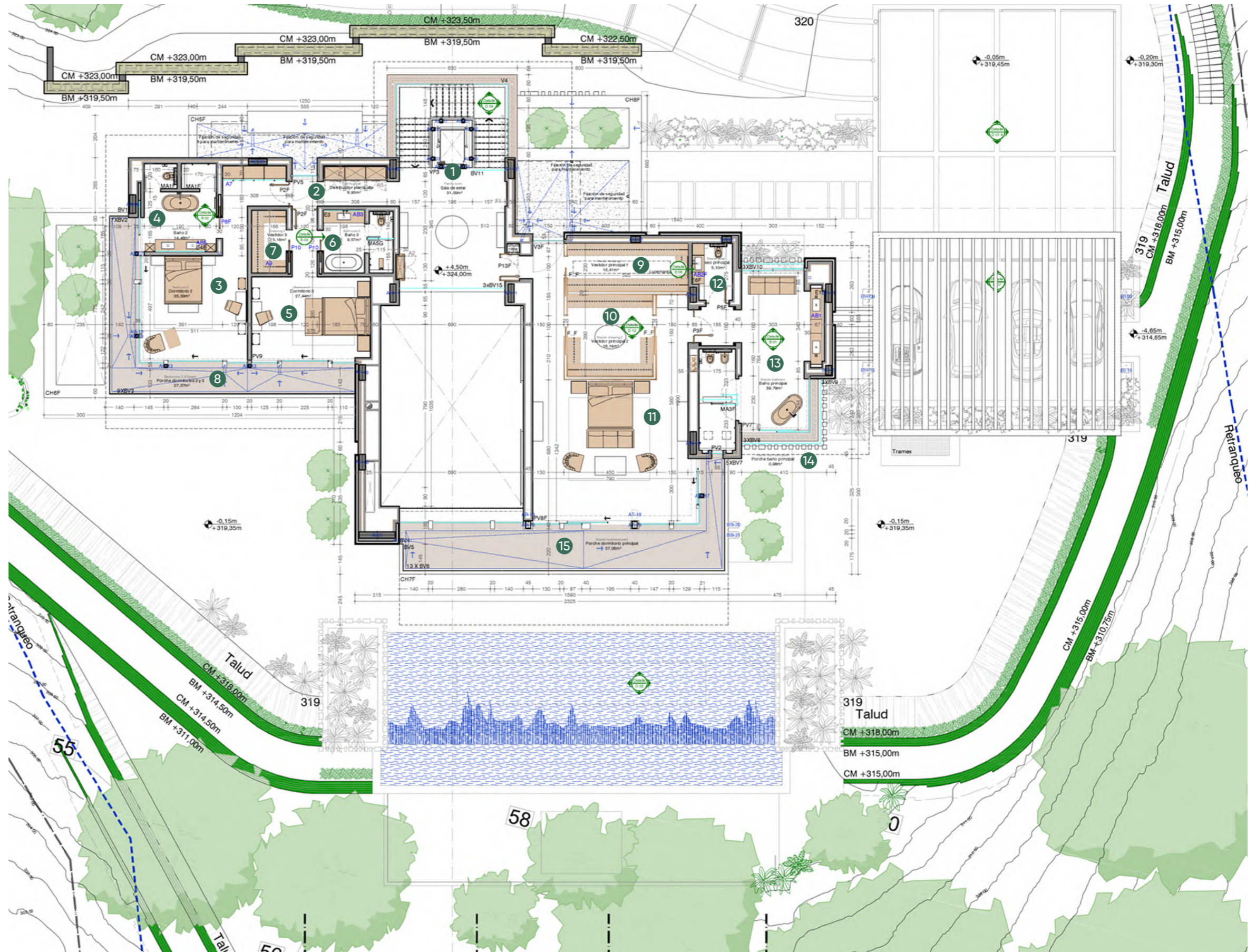
1	Ground floor hall	37.54 m <sup>2</sup>
2	Dressing 4	15.15 m <sup>2</sup>
3	Bedroom 4	
4	Bathroom 4	14.41 m <sup>2</sup>
5	Bedroom 5	31.75 m <sup>2</sup>
6	Bathroom 5	14.17 m <sup>2</sup>
7	Bedrooms 4 & 5 porch	26.51 m <sup>2</sup>
8	Bedrooms 4 & 5 terrace	15.04 m <sup>2</sup>
9	Entrance hall	8.73 m <sup>2</sup>
10	Toilet 1	9.77 m <sup>2</sup>
11	Lounge dining kitchen	164.27 m <sup>2</sup>
12	Pantry	8.46 m <sup>2</sup>
13	Staff kitchen	36.85 m <sup>2</sup>
14	Entrance porch	13.93 m <sup>2</sup>
15	Staff access porch	5.22 m <sup>2</sup>
16	Parking	116.77 m <sup>2</sup>
17	Garden terrace	16.97 m <sup>2</sup>
18	Outdoor swimming pool	93.55 m <sup>2</sup>
19	Overflow	38.66 m <sup>2</sup>





# FIRST FLOOR

1	Family room	31.00 m <sup>2</sup>
2	First floor hall	8.93 m <sup>2</sup>
3	Bedroom 2	35.33 m <sup>2</sup>
4	Bathroom 2	14.48 m <sup>2</sup>
5	Bedroom 3	27.44 m <sup>2</sup>
6	Bathroom 3	9.57 m <sup>2</sup>
7	Dressing Room 3	5.18 m <sup>2</sup>
8	Bedrooms 2 & 3 porch	27.37 m <sup>2</sup>
9	Master dressing 1	13.41 m <sup>2</sup>
10	Master dressing 2	16.14 m <sup>2</sup>
11	Master bedroom	71.50 m <sup>2</sup>
12	Master toilet	5.10 m <sup>2</sup>
13	Master bathroom	39.79 m <sup>2</sup>
14	Master bathroom porch	0.98 m <sup>2</sup>
15	Master bedroom porch	37.06 m <sup>2</sup>





# BASEMENT 1

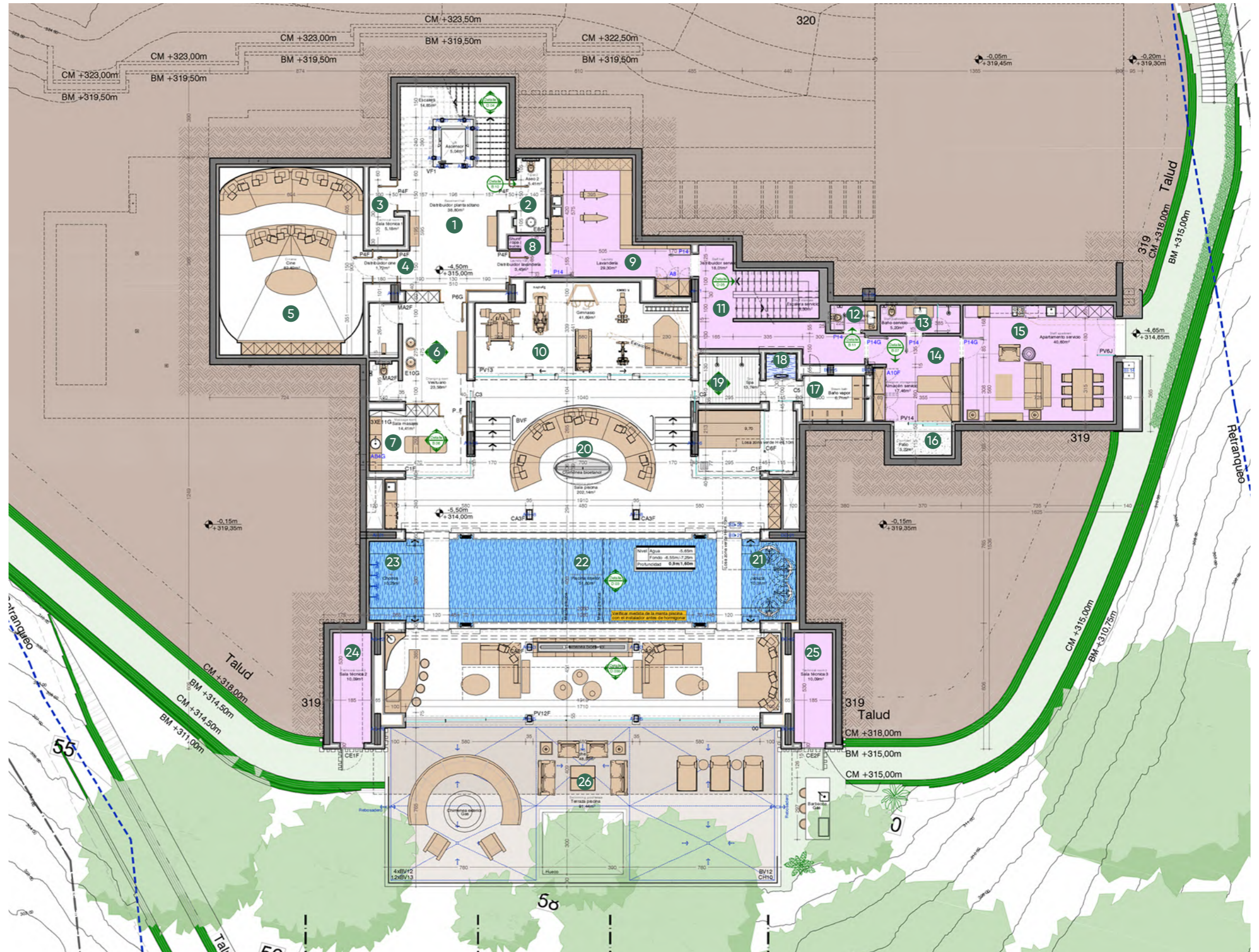
1	Technical room 4	70.89 m <sup>2</sup>
2	Indoor pool	15.65 m <sup>2</sup>
3	Swimming pool compensation tank	5.63 m <sup>2</sup>
4	Technical room access	16.66 m <sup>2</sup>
5	Storage room	19.92 m <sup>2</sup>
6	Staff staircase	8.30 m <sup>2</sup>





# BASEMENT 2

1	Basement hall	38.80 m <sup>2</sup>
2	Toilet 2	5.41 m <sup>2</sup>
3	Technical room 1	5.18 m <sup>2</sup>
4	Cinema hall	1.72 m <sup>2</sup>
5	Cinema	62.82 m <sup>2</sup>
6	Changing room	23.56 m <sup>2</sup>
7	Massage room	14.41 m <sup>2</sup>
8	Laundry hall	3.45 m <sup>2</sup>
9	Laundry	29.30 m <sup>2</sup>
10	Gym	41.69 m <sup>2</sup>
11	Staff hall	18.01 m <sup>2</sup>
12	Staff toilet	2.70 m <sup>2</sup>
13	Staff bathroom	5.20 m <sup>2</sup>
14	Garden storage room	17.76 m <sup>2</sup>
15	Staff apartment	40.60 m <sup>2</sup>
16	Courtyard	3.22 m <sup>2</sup>
17	Seam bath	6.71 m <sup>2</sup>
18	Cold water	1.74 m <sup>2</sup>
19	Spa	13.74 m <sup>2</sup>
20	Swimming pool room	202.14 m <sup>2</sup>
21	Jacuzzi	10.31 m <sup>2</sup>
22	Indoor Swimming Pool	51.60 m <sup>2</sup>
23	Jets	10.25 m <sup>2</sup>
24	Technical Room 2	10.09 m <sup>2</sup>
25	Technical Room 3	10.09 m <sup>2</sup>
26	Swimming Pool Terrace	91.44 m <sup>2</sup>





# LIVING ROOM













# KITCHEN













# MASTER BEDROOM













# MASTER BATHROOM









BEDROOM 4









# BATHROOM 4





BEDROOM 5









BATHROOM 5



VILLA EDEN / BATHROOM 5





# DRESSING ROOM













CINEMA













MASSAGE ROOM







VILLA EDEN / MASSAGE ROOM





# CHANGING ROOM







VILLA EDEN / CHANGING ROOM



INTERIOR DESIGN CONCEPT 44



# SAUNA

















# GYM









INDOOR  
SWIMMING POOL

















TERRACE

















