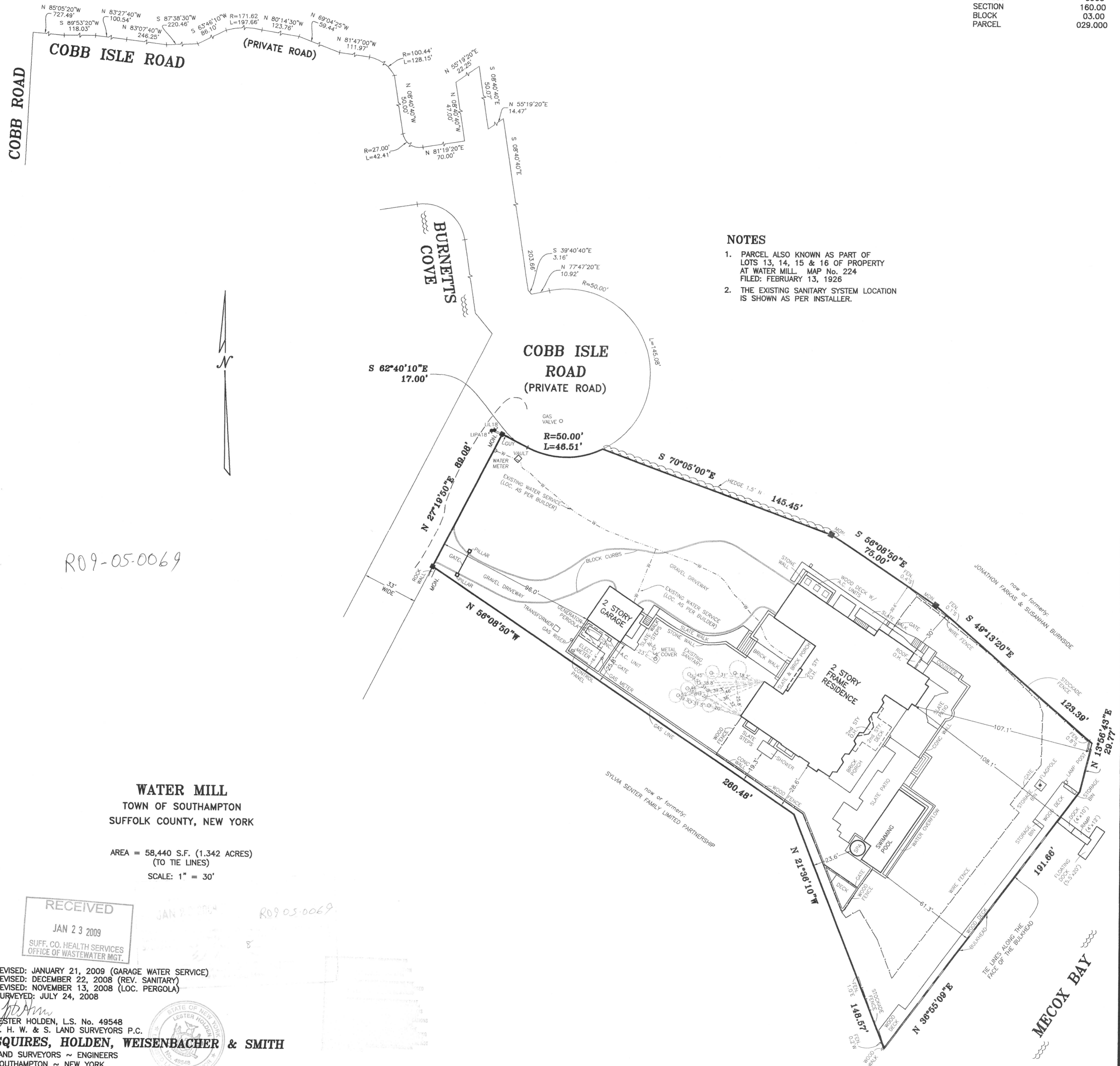


DISTRICT	0900
SECTION	160.00
BLOCK	03.00
PARCEL	029.000



NOTES

1. PARCEL ALSO KNOWN AS PART OF LOTS 13, 14, 15 & 16 OF PROPERTY AT WATER MILL MAP No. 224 FILED: FEBRUARY 13, 1926
2. THE EXISTING SANITARY SYSTEM LOCATION IS SHOWN AS PER INSTALLER.

R09-05-0069

WATER MILL
 TOWN OF SOUTHAMPTON
 SUFFOLK COUNTY, NEW YORK

AREA = 58,440 S.F. (1.342 ACRES)
 (TO TIE LINES)
 SCALE: 1" = 30'

RECEIVED
 JAN 23 2009
 SUFF. CO. HEALTH SERVICES
 OFFICE OF WASTEWATER MGT.

REVISED: JANUARY 21, 2009 (GARAGE WATER SERVICE)
 REVISED: DECEMBER 22, 2008 (REV. SANITARY)
 REVISED: NOVEMBER 13, 2008 (LOC. PERGOLA)
 SURVEYED: JULY 24, 2008

LESTER HOLDEN, L.S. No. 49548
 S. H. W. & S. LAND SURVEYORS P.C.
SQUIRES, HOLDEN, WEISENBACHER & SMITH
 LAND SURVEYORS ~ ENGINEERS
 SOUTHAMPTON ~ NEW YORK

