

formerly Marguerite Post Rich
now or formerly
M M F Associates

CONCRETE CURB

PAVED DRIVE

LILOO TRANSFORMER

TEL. CO. BOX

CURB 1.6' EAST

RETAINING WALL

ROOF ON

ROOF ON

ROOF ON

ROOF ON

ROOF ON

ROOF ON

N 84° 52' 40" W

S 84° 52' 40" E

S 19° 20' 20" W

N 29° 48' 44" E

N 69° 45' 45" W

S 86° 21' 11" W

475.18'

639.23'

197.28'

197.28'

197.28'

487.03'

486.66'

40.04'

20.02'

365.76'

3.6' W

30.4'

2.7' W

1.62'

1.62'

1.62'

1.62'

1.62'

1.62'

1.62'

1.62'

1.62'

1.62'

1.62'

1.62'

1.62'

1.62'

1.62'

1.62'

1.62'

1.62'

1.62'

1.62'

1.62'

1.62'

1.62'

1.62'

1.62'

1.62'

1.62'

1.62'

1.62'

1.62'

1.62'

1.62'

1.62'

1.62'

1.62'

1.62'

1.62'

1.62'

1.62'

1.62'

1.62'

1.62'

1.62'

1.62'

1.62'

1.62'

1.62'

1.62'

1.62'

1.62'

1.62'

1.62'

1.62'

1.62'

1.62'

1.62'

1.62'

1.62'

1.62'

1.62'

1.62'

1.62'

1.62'

1.62'

1.62'

1.62'

1.62'

1.62'

1.62'

1.62'

1.62'

1.62'

1.62'

1.62'

1.62'

now or formerly
Lloyd B. & Goll Gollieb

now or formerly
Jack Benson

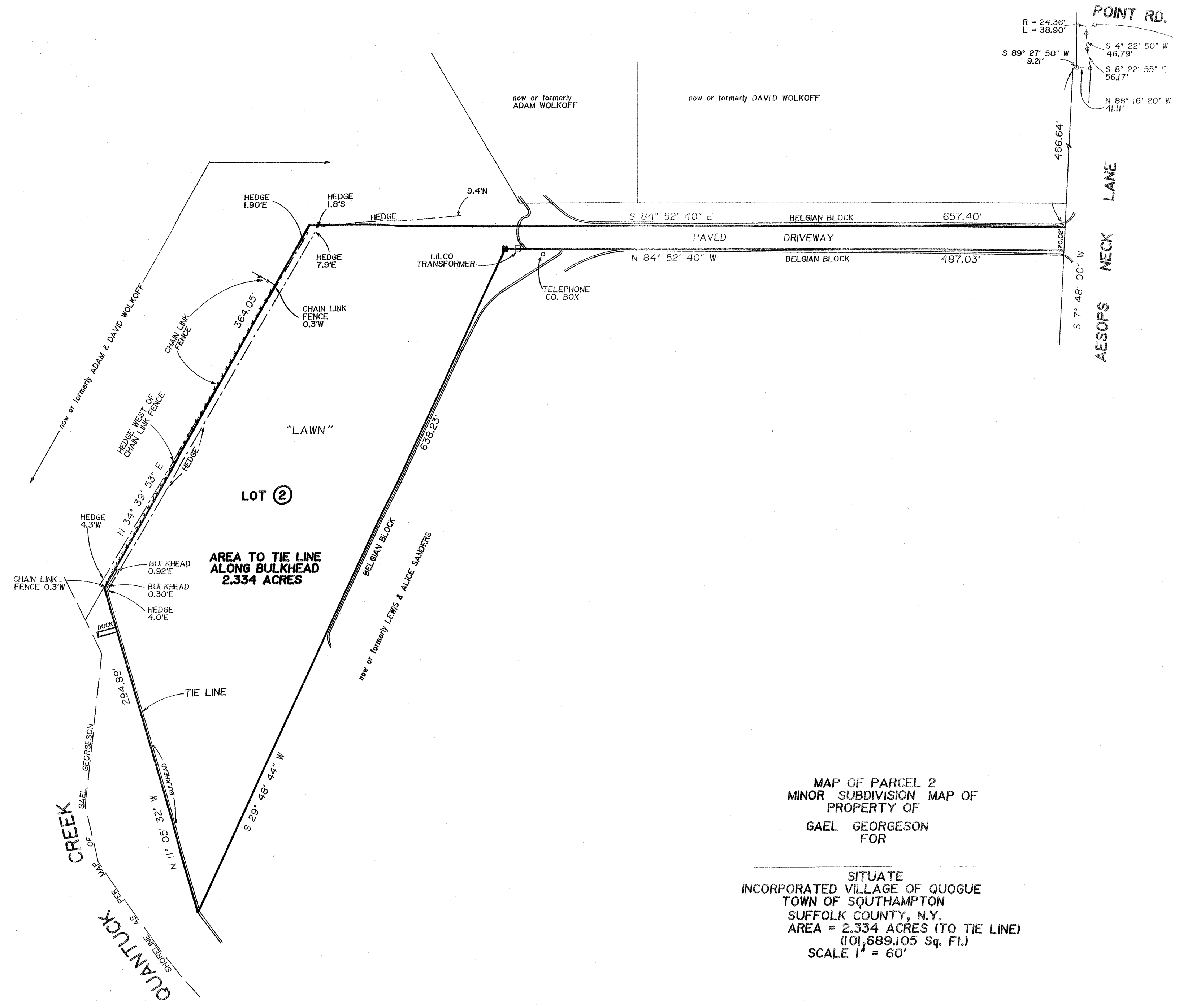
MAP OF PARCEL 3
MINOR SUBDIVISION MAP OF
PROPERTY OF
GAEL GEORGESON
FOR

SITUATE
INCORPORATED VILLAGE OF QUOQUE
TOWN OF SOUTHAMPTON
SUFFOLK COUNTY, N.Y.
AREA = 2.829 ACRES (TO HIGH WATER LINE)
SCALE 1" = 60'

INDICATES MONUMENT
INDICATES STAKE

SUFFOLK COUNTY TAX MAP
DISTRICT 0902
SECTION 007.00
BLOCK 01.00
PARCEL 007.007

LAND SURVEYORS ENGINEERS
SOUTHAMPTON, NEW YORK



MAP OF PARCEL 2
MINOR SUBDIVISION MAP OF
PROPERTY OF
GAEL GEORGESON
FOR

SITUATE
INCORPORATED VILLAGE OF QUOGUE
TOWN OF SOUTHAMPTON
SUFFOLK COUNTY, N.Y.
AREA = 2.334 ACRES (TO TIE LINE)
(101,689.105 Sq. Ft.)
SCALE 1" = 60'

■ INDICATES MONUMENT