



1 First Floor Proposed
1/4" = 1'-0"

A101-A First Floor Plan Completed
* SCALE APPLIES WHEN PRINTED ON A 24" X 36" SHEET

CHALEFF & ROGERS ARCHITECTS
151/4 MONTAUK HIGHWAY BOX 990 WATER MILL, N.Y. 11976 631-726-4477

REV	DATE	REMARKS

ELDERBERRY
RFXS - LBS
520 Montauk Hwy, Southampton, NY
A101-A First Floor Plan Completed
* SCALE: 1/4" = 1'-0" | DRAWN BY: Author | ISSUED: 04/05/17

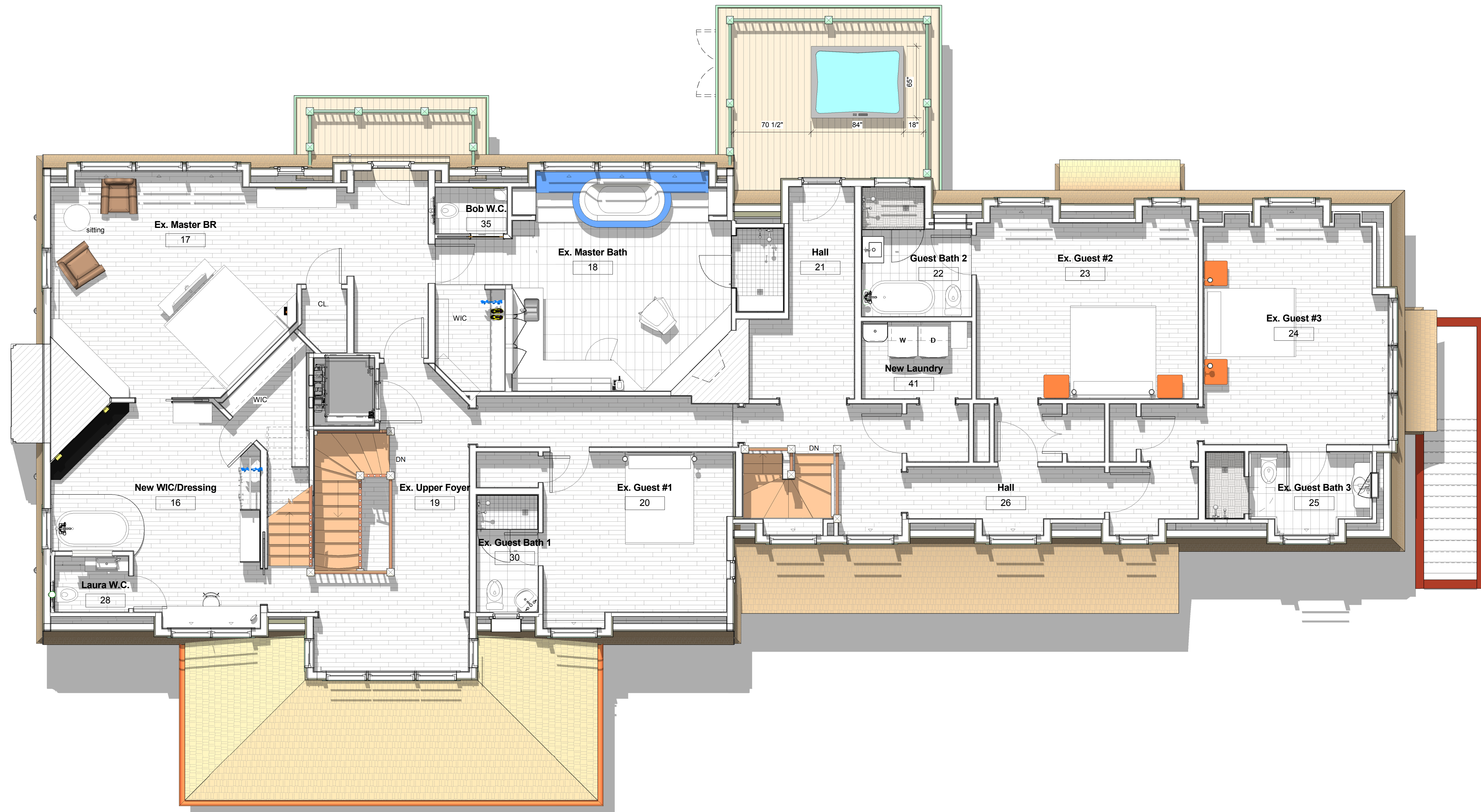
DRAWING NUMBER:

A101-A

PROJECT No: 933 K

Construction Set

7/27/2017 1:24:40 PM



L2.0 Second Floor Proposed WHOLE
 FURNITURE
 1 1/4" = 1'-0"

CHALEFF & ROGERS ARCHITECTS
 1514 MONTAUK HIGHWAY BOX 990 WATER MILL, N.Y. 11976 631-726-4477

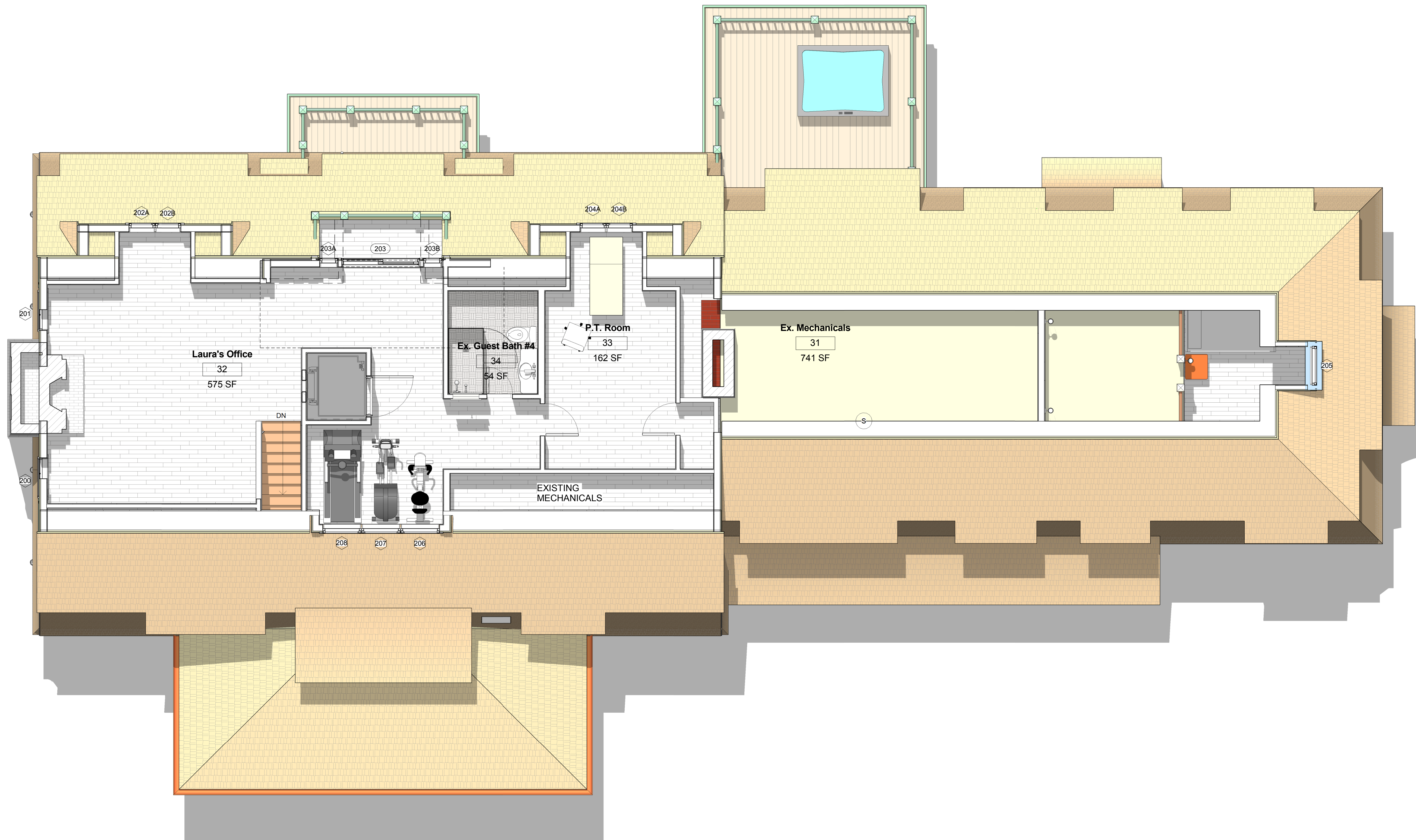
REV	DATE	REMARKS

ELDERBERRY
 RFXS - LBS
 520 Montauk Hwy, Southampton, NY
 A102-A Second Floor Plan Completed
 * SCALE: 1/4" = 1'-0" DRAWN BY: Author ISSUED: 04/05/17

DRAWING NUMBER:
A102-A
 PROJECT No: 933 K
 7/27/2017 1:24:51 PM

A102-A Second Floor Plan Completed
 * SCALE APPLIES WHEN PRINTED ON A 24" X 36" SHEET

Construction Set



1 L3.0 Third Floor - FURNITURE
1/4" = 1'-0"

REV	DATE	REMARKS

ELDERBERRY

RFXS - LBS
520 Montauk Hwy, Southampton, NY

A103-A Third Floor Plan Completed
* SCALE: 1/4" = 1'-0" | DRAWN BY: Author | ISSUED: 04/28/17

DRAWING NUMBER:
A103-A

PROJECT No: 933 K
7/27/2017 1:25:01 PM



A200 Elevations
 * SCALE APPLIES WHEN PRINTED ON A 24" X 36" SHEET

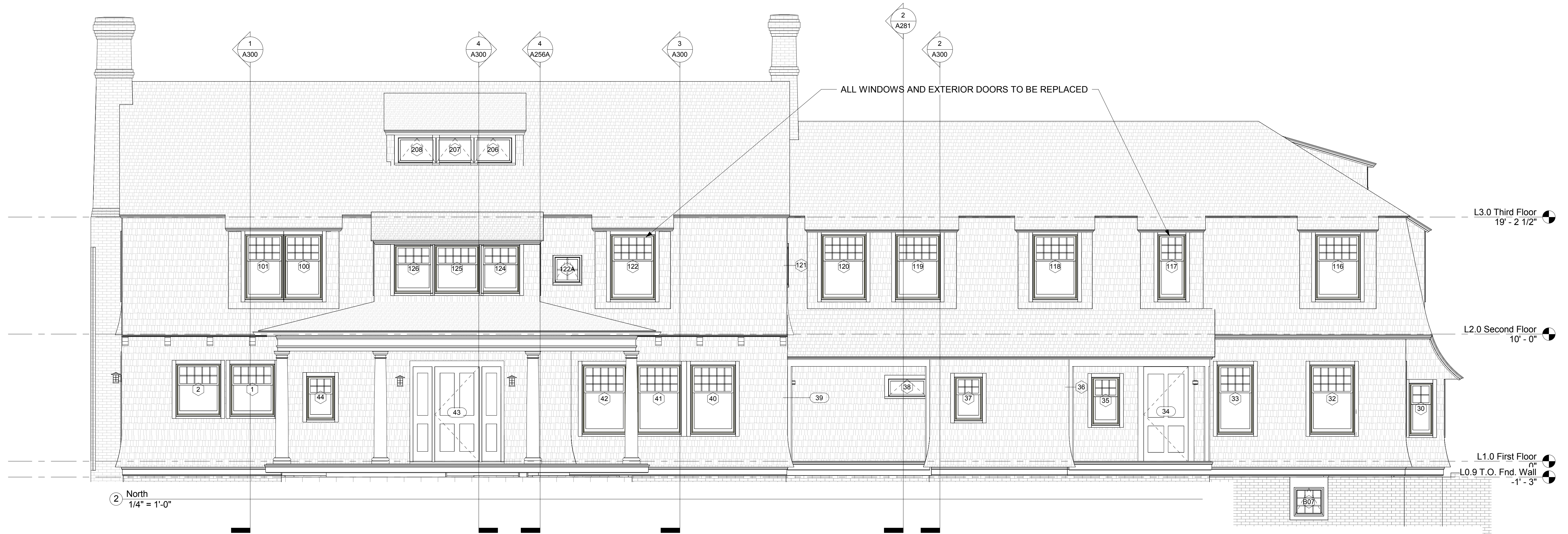
CHALEFF & ROGERS ARCHITECTS
 1514 MONTAUK HIGHWAY BOX 990 WATER MILL, N.Y. 11976 631-726-4477

REVISIONS:	REV	DATE	REMARKS

ELDERBERRY
 RFXS - LBS
 520 Montauk Hwy, Southampton, NY
 A200 Elevations
 * SCALE: 1/4" = 1'-0" DRAWN BY: ISSUED: 04/05/17

DRAWING NUMBER:
A200
 PROJECT NO: 933 K

Construction Set



CHALEFF & ROGERS ARCHITECTS
 1514 MONTAUK HIGHWAY BOX 990 WATER MILL, N.Y. 11976 631-726-4477

REV	DATE	REMARKS

ELDERBERRY

RFXS - LBS
 520 Montauk Hwy, Southampton, NY

A201 Elevations

* SCALE: 1/4" = 1'-0" DRAWN BY: ISSUED: 04/05/17

DRAWING NUMBER:

A201

PROJECT No: 933 K

A201 Elevations
 * SCALE APPLIES WHEN PRINTED ON A 24" X 36" SHEET

Construction Set