

LINE: 23.322 sq. ft.
acres

Noyack Bay



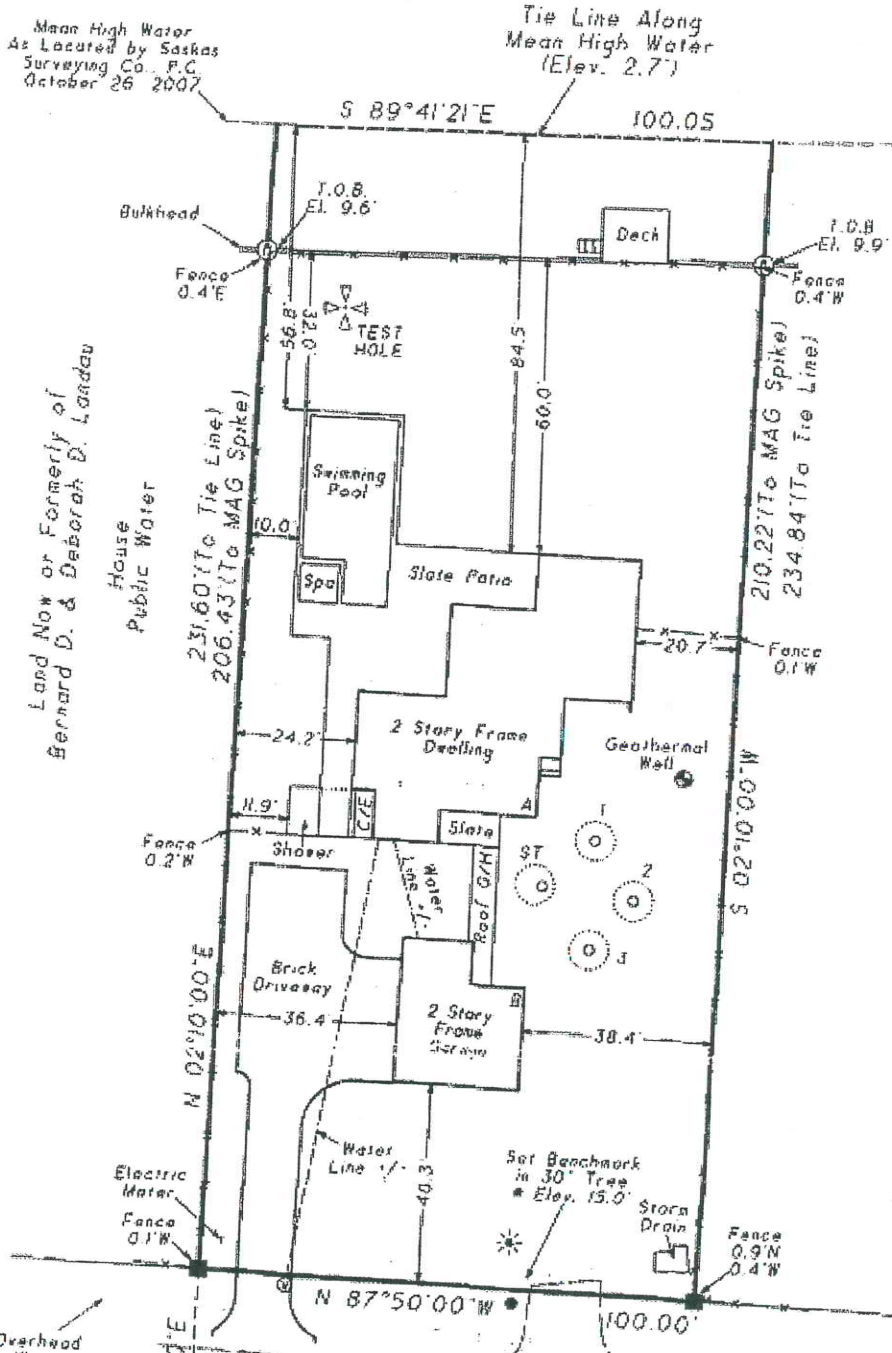
"X" Zone

To:

Date: Nov 10 2010 File: 2009-08 0339

The drawings, documents and water marks on this site location have been inspected and/or certified by the Surveyor General of the Province of Saskatchewan as being correct and true to the original records and to be in accordance with the provisions of the Survey Act, R.S.S. (1978), c. S-24.1.

Walter J. Hilbert, P.E., Chief
Office of Waterways Management
Land Now or Formerly of
Melsie Residential Trust
House
Public Water



MPTON:
7 sq. ft. (0.03%)

sq. ft.
7 sq. ft. (0.03%)

3.322 sq. ft. (0.01%)

as Surveying Co., P.C.
ber 31, 2007
ation 11.5'

in sand
deater * Elevation 1.1'

SYSTEM

- stake.
- nail.
- iron spike.
- concrete monument.
- 'MAG' spike in bulkhead.
- ty pole.
- meter

Noyack Bay Avenue